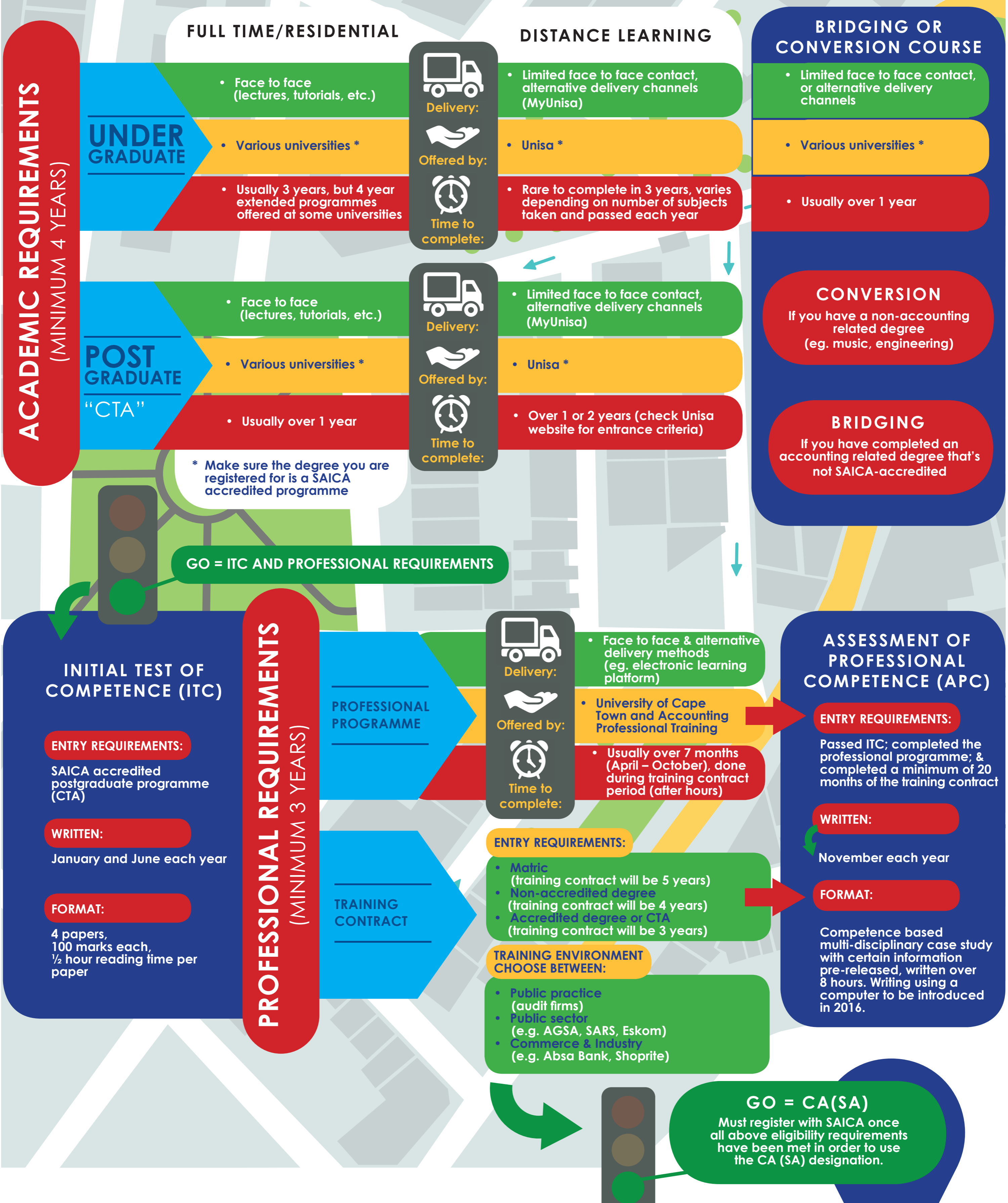


# YOUR ROADMAP TO BECOMING a CA(SA)



## ACADEMIC REQUIREMENTS (MINIMUM 4 YEARS)

### FULL TIME/RESIDENTIAL

### DISTANCE LEARNING

#### UNDER GRADUATE

- Face to face (lectures, tutorials, etc.)
- Various universities \*
- Usually 3 years, but 4 year extended programmes offered at some universities



Delivery:



Offered by:



Time to complete:

- Limited face to face contact, alternative delivery channels (MyUnisa)
- Unisa \*
- Rare to complete in 3 years, varies depending on number of subjects taken and passed each year

### BRIDGING OR CONVERSION COURSE

- Limited face to face contact, or alternative delivery channels
- Various universities \*
- Usually over 1 year

#### POST GRADUATE "CTA"

- Face to face (lectures, tutorials, etc.)
- Various universities \*
- Usually over 1 year



Delivery:



Offered by:



Time to complete:

- Limited face to face contact, alternative delivery channels (MyUnisa)
- Unisa \*
- Over 1 or 2 years (check Unisa website for entrance criteria)

### CONVERSION

If you have a non-accounting related degree (eg. music, engineering)

### BRIDGING

If you have completed an accounting related degree that's not SAICA-accredited

\* Make sure the degree you are registered for is a SAICA accredited programme

GO = ITC AND PROFESSIONAL REQUIREMENTS

## INITIAL TEST OF COMPETENCE (ITC)

### ENTRY REQUIREMENTS:

SAICA accredited postgraduate programme (CTA)

### WRITTEN:

January and June each year

### FORMAT:

4 papers, 100 marks each, ½ hour reading time per paper

## PROFESSIONAL REQUIREMENTS (MINIMUM 3 YEARS)

### PROFESSIONAL PROGRAMME



Delivery:



Offered by:



Time to complete:

- Face to face & alternative delivery methods (eg. electronic learning platform)
- University of Cape Town and Accounting Professional Training
- Usually over 7 months (April – October), done during training contract period (after hours)

### TRAINING CONTRACT

### ENTRY REQUIREMENTS:

- Matric (training contract will be 5 years)
- Non-accredited degree (training contract will be 4 years)
- Accredited degree or CTA (training contract will be 3 years)

### TRAINING ENVIRONMENT CHOOSE BETWEEN:

- Public practice (audit firms)
- Public sector (e.g. AGSA, SARS, Eskom)
- Commerce & Industry (e.g. Absa Bank, Shoprite)

## ASSESSMENT OF PROFESSIONAL COMPETENCE (APC)

### ENTRY REQUIREMENTS:

Passed ITC; completed the professional programme; & completed a minimum of 20 months of the training contract

### WRITTEN:

November each year

### FORMAT:

Competence based multi-disciplinary case study with certain information pre-released, written over 8 hours. Writing using a computer to be introduced in 2016.

## GO = CA(SA)

Must register with SAICA once all above eligibility requirements have been met in order to use the CA (SA) designation.